



**Medical/Office Space Available**  
**9150 Market Square Dr.**  
 Streetsboro, Ohio



**Property Description**

- 2 Story, 21,000 SF Medical/ Office Complex with Elevator

**Suites Available:**

- Suite 101: 2,028 SF +/-
- Suite 102: 1,953 SF +/-
- Suite 104: 2,094 SF +/-
- Suite 203: 4,816 SF +/-

- Built in 2000
- Close proximity to Ohio Turnpike, I-480.
- Directly from Target, Lowe's and Giant Eagle.
- Lighted parking lot.
- Access to restaurants and community shopping.

**contact information**  
 Robert K. Brehmer, CCIM  
 rbrehmer@naidaus.com  
 216.831.3310 Ext. 120  
 Lisa Trevino  
 ltrevino@naidaus.com  
 216.831.3310 Ext. 185

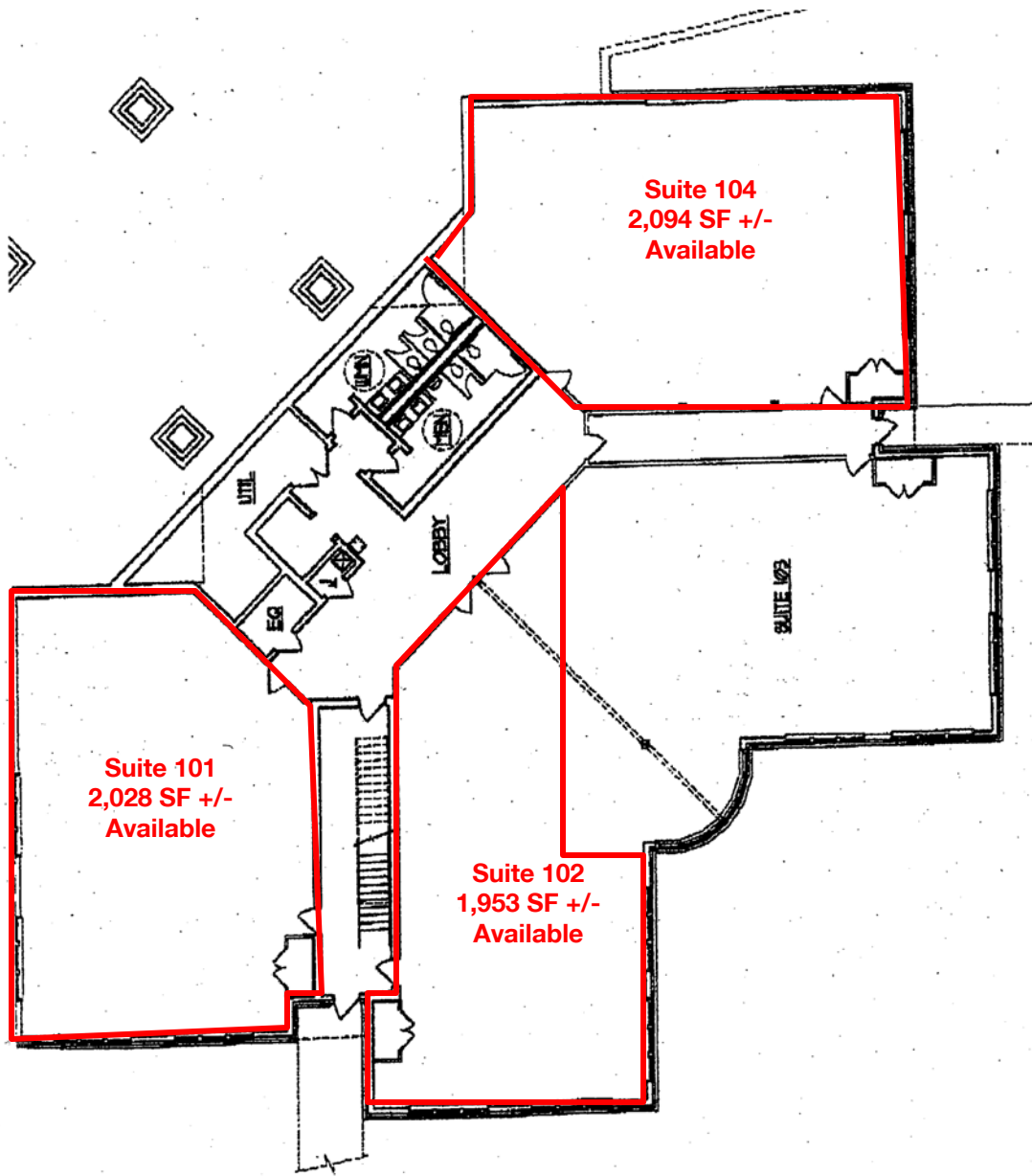
23240 Chagrin Blvd., #250  
 Cleveland, OH 44122  
 www.naidaus.com



Commercial Real Estate Services, Worldwide.  
 Business Property Specialists, Inc. Broker

This information has been secured from sources we believe to be reliable, but we make no representations or warranties, expressed or implied, as to the accuracy of the information. References to condition, square footage or age are approximate. Buyer or Tenant acknowledges that they are relying on their own investigations and are not relying on Broker provided information.

9150 Market Square Drive  
**First Floor**  
Streetsboro, Ohio



**Demographics:** (3,5,10-mile radius/2009 estimate)

Population: 17,585 / 51,618 / 252,062  
Households: 7,315 / 20,117 / 99,815  
Ave. Household Income: \$80,892 / \$96,201 / \$77,990

**contact information**  
Robert K. Brehmer, CCIM  
rbrehmer@naidaus.com  
216.831.3310 Ext. 120  
Lisa Trevino  
ltrevino@naidaus.com  
216.831.3310 Ext. 185

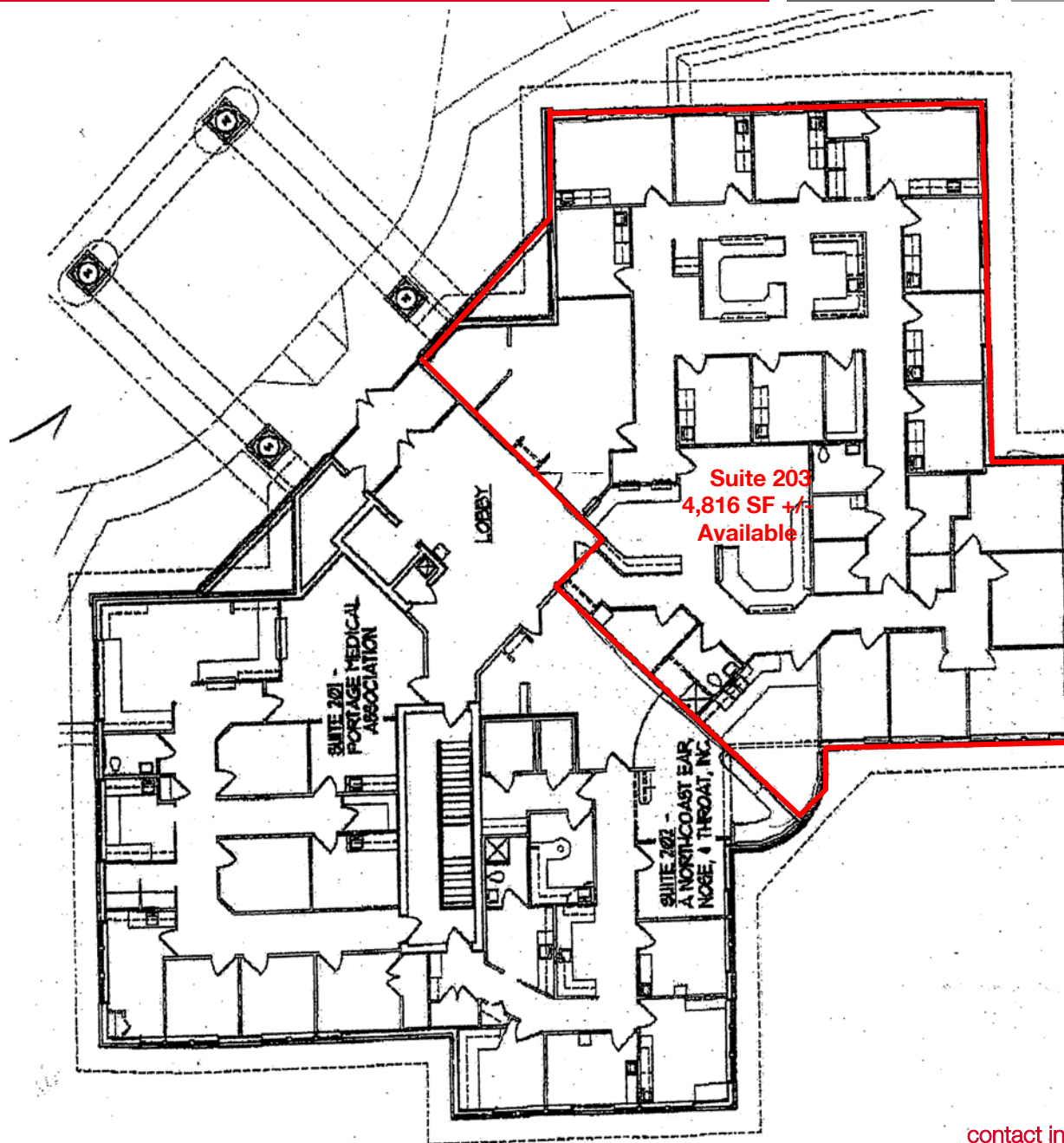


Commercial Real Estate Services, Worldwide.  
Business Property Specialists, Inc. Broker

Fax: 216.831.9869  
3401 Enterprise Pkw., #105  
Cleveland, OH 44122  
www.naidaus.com

This information has been secured from sources we believe to be reliable, but we make no representations or warranties, expressed or implied, as to the accuracy of the information. References to condition, square footage or age are approximate. Buyer or Tenant acknowledges that they are relying on their own investigations and are not relying on Broker provided information.

9150 Market Square Drive  
**Second Floor**  
Streetsboro, Ohio



**contact information**  
Robert K. Brehmer, CCIM  
rbrehmer@naidaus.com  
216.831.3310 Ext. 120  
Lisa Trevino  
ltrevino@naidaus.com  
216.831.3310 Ext. 185



Commercial Real Estate Services, Worldwide.  
Business Property Specialists, Inc. Broker

Fax: 216.831.9869  
3401 Enterprise Pkw., #105  
Cleveland, OH 44122  
www.naidaus.com

This information has been secured from sources we believe to be reliable, but we make no representations or warranties, expressed or implied, as to the accuracy of the information. References to condition, square footage or age are approximate. Buyer or Tenant acknowledges that they are relying on their own investigations and are not relying on Broker provided information.